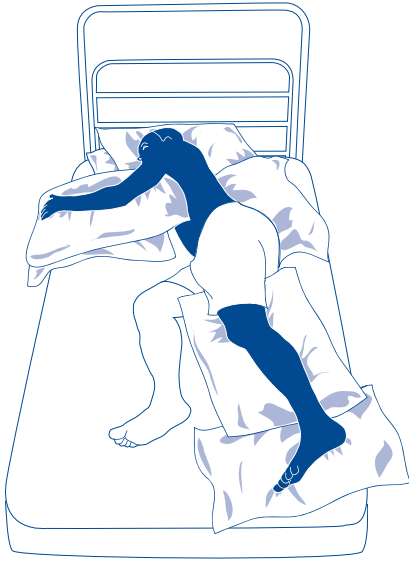


POSITIONING FOR PEOPLE AFFECTED BY STROKE



The careful positioning and placement of pillows can be used to achieve safe and comfortable postures.

Affected stroke side is in blue. Pictures do not depict bed rails.



LYING ON AFFECTED SIDE

- One or two pillows for head
- Affected shoulder positioned comfortably
- Place unaffected leg forward on one or two pillows
- Place pillows in front and behind



LYING ON UNAFFECTED SIDE

- One or two pillows for head
- Affected shoulder forward with arm supported on pillow
- Place affected leg backwards on one or two pillows
- Place a pillow behind.

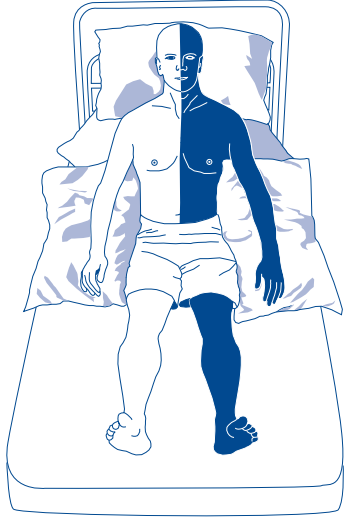


LYING ON BACK (if desired)

- Place three pillows supporting both shoulders and head
- Place affected arm on pillow.
- Optional pillow beneath affected hip
- Ensure feet in neutral position

SITTING UP

- Sitting well back in the centre of chair or wheelchair
- Place arms well forward onto two pillows on table
- Feet flat on floor or footrests
- Knees directly above feet



SITTING IN BED

- Sitting in bed is desirable for short periods only
- Sitting upright well supported by pillows
- Place both arms on pillows
- Legs supported for comfort

CHSS takes no responsibility for the consequences of error, loss or damage suffered by users of information published on this chart.

CHEST, HEART & STROKE SCOTLAND
 65 North Castle Street, Edinburgh EH2 3LT
 Tel: 0131 225 6963 Fax: 0131 220 6313
 Advice Line: 0845 077 6000
 Website: www.chss.org.uk

